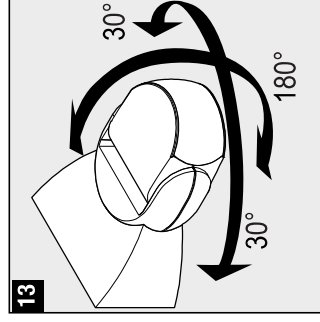
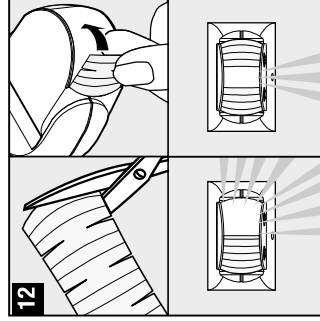
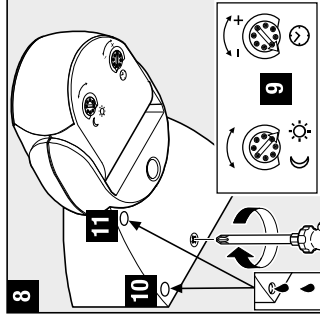
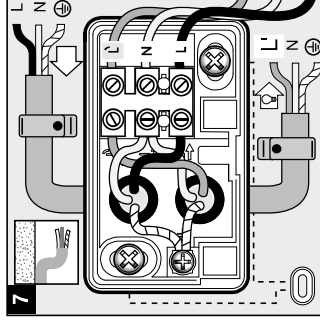
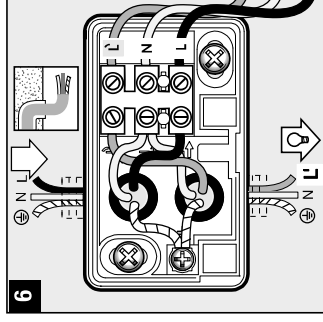
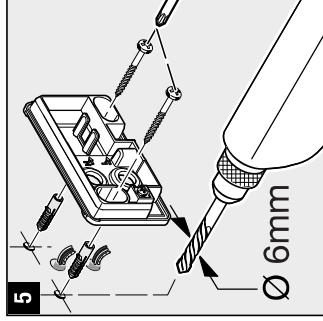
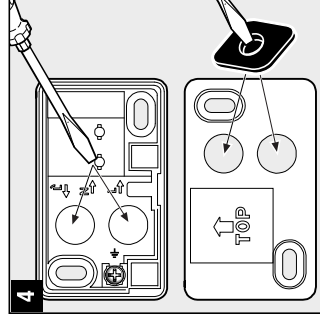
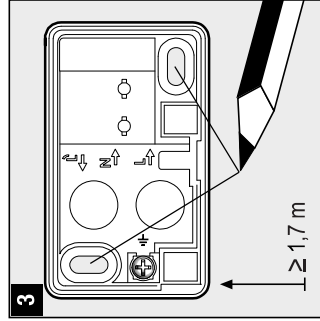
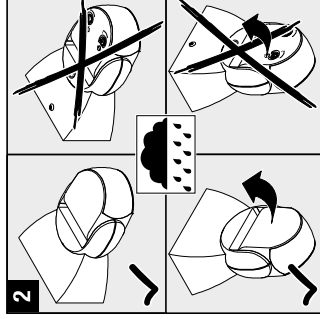
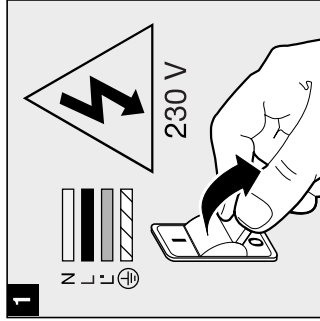


i | IS 1

	50 x 80 x 120 mm
	230 - 240 V
	max. 500 W
	max. 500 W cos φ=0,5
	max. 4x58 W, C ≤ 88 µF 14
	120°
	max. 10 m

	IP 54
	2 - 2000 Lux
	8 sek. - 35 min.
	LED, CFL, Incandescent Ø 6 mm



Principle
 Movement triggers lights, alarms and many other devices - for your convenience and safety. The integrated pyroelectric infrared detector senses the invisible heat radiated from moving objects (people, animals, etc.). The heat detected in this way is converted electronically into a signal that activates the lead connected. Heat radiation is not detected through obstacles, such as walls or glass, and will therefore not activate the light.

Safety warnings

- During installation, the electrical wiring being connected must be dead.
- Therefore, switch off the power first and use a voltage tester to check that the power supply is disconnected.
- Installing this unit involves work on the mains voltage supply. This must therefore be carried out in accordance with applicable national wiring regulations and electrical operating conditions.
- Only use genuine replacement parts.
- Do not dismantle the unit yourself. It must only be repaired by a specialist workshop.

Installation 1 - 11

L = live conductor (usually black or brown)
 N = neutral conductor (usually blue)
 PE = any protective earth conductor (green/yellow)
 Attention: Loop the protective-earth conductor (through) if necessary. A mains power switch for turning the unit ON and OFF may of course be installed in the mains supply lead. Important: Reversing the connections may result in damage to the unit. Please note that the light must be protected by a 10 A circuit breaker. If necessary, the hole to let out condensation water **10** wall mounting, **11** ceiling mounting) must be opened up with a 5 mm drill bit.

14 Fluorescent lamps, low-energy bulbs, LED lights with electronic ballast (total capacity of all connected ballasts below the value specified) operating on 230 V AC.

Function 9

Twilight setting (factory setting; daylight operation at 2000 lux):
 Control dial set to ☼ = daylight operation at approx. 2000 lux.
 Control dial set to ☾ = night-time operation at approx. 2 lux.
 To adjust the detection zone in daylight, the control dial must be set to ☼ (daylight operation).

Time setting (factory setting; 8 sec.): Light ON time can be adjusted continuously from 8 sec. to 35 min.
 Control dial set to + = longest time (35 min.)
 Control dial set to - = shortest time (8 sec.)

When setting the detection zone, it is recommended to select the shortest time -.

Adjusting the detection zone

12 using adhesive shrouds, e.g. for masking out paths or neighbouring property
13 Reach 2 - 10 m, by turning the sensor lens through 180°.

Troubleshooting (Fault / Cause > Remedy)

No power / Fuse faulty, not switched on -> new fuse, turn power switch ON, check lead with voltage tester.
Will not switch ON / Surroundings still too bright -> wait until response threshold is reached or adjust setting / Bulb faulty -> change bulb / Power switch OFF -> switch on / Detection zone not properly targeted -> readjust. **Will not switch OFF** / Surroundings not yet bright enough -> wait until response threshold is reached or adjust setting / Permanent movement in the detection zone -> adjust detection zone / set to manual override -> two-circuit switch to automatic. **Keeps switching ON/OFF** / there is a light in the detection zone -> change detection zone, increase distance. **Switches ON when unwanted** / detecting cars on the road, for example -> change detection zone, lift sensor down. **Reach changing** / differing ambient temperatures -> at low temperatures, shorten reach by tilting sensor down.

Declaration of conformity

This product complies with Directive 2006/95/EEC on low-voltage appliances and EMC Directive 2004/108/EEC.

Functional warranty

This STEINEL product has been manufactured with great care, tested for proper operation and safety in accordance with applicable regulations and then subjected to random sample inspection. STEINEL guarantees that it is perfect condition and proper working order. The warranty period is 36 months, starting from the date of sale to the consumer. We will remedy defects caused by material flaws or manufacturing faults. The warranty will be met by repair or replacement of defective parts at our own discretion. The warranty does not cover damage to wear parts, nor does it cover damage or defects caused by improper treatment, maintenance or the use of non-genuine parts. Further consequential damage to other objects shall be excluded. The warranty will only be honoured if the product is sent to the appropriate Service Centre fully assembled and well packed with a brief description of the fault, receipt or invoice (date of purchase and dealer's stamp).

Service:

Our Customer Service Department will repair faults not covered by warranty or after the warranty period. Please send the product well packed to your nearest Service Centre.